

Clipstream Live™ Server 2.5 Quick Start

Destiny Software's **Clipstream™ Live** is an application that enables you to webcast Live video from a Windows PC to a Java-enabled web browser or email. All that is required is a Windows PC, a camera or live video input and a sufficient internet connection.

How it works

Clipstream™ Live creates a mini virtual web server on the broadcasting PC with a live camera or video input (ex. TV cable input). **Clipstream™ Live** converts the video signal into a compressed *live* stream. The stream is displayed on an applet embedded into a web page. This web page can be viewed from outside the broadcasting PC by anyone with a Java-enabled browser or via email if the applet code is emailed to a recipient.

Minimum requirements

Hardware

- 800mhz Intel / AMD CPU
- 128mbs RAM
- 5mb hard drive space (more space needed for archiving)
- Video input device such as:
 - USB Webcam
 - Any camera with FireWire (IEEE 1394) input
 - Live TV cable feed into video capture card
 - Screen capture software (ex. Camtasia)
- Video capture card / USB / FireWire input card
- Ethernet network card for Internet connectivity



Software

- Windows NT 4.0/2000/XP
- IE 6 / Firefox 1.0 / Netscape 7 / Opera
- browser
- Java enabled in browser
- DirectX 8.1 or higher

Internet

- 128kbps or greater Internet connection
- Network admin access (for troubleshooting / security)

Downloading / Installing

Clipstream™ Live can be downloaded from this link:

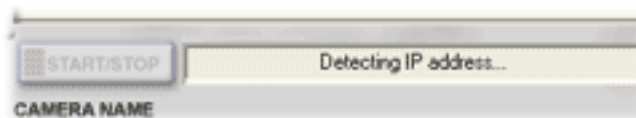
<http://live.clipstream.com/try.shtml>

1. Fill out the form and submit.
2. Check your email. Find the email that was sent to you by the automated system and click on the provided download link.
3. Save it to your hard drive and open the **ClipstreamLiveInstaller.exe**.
4. Read the License Agreement and click **I agree**.
6. Select the type of install and then click **Next**.
7. Select the directory to install **Clipstream™ Live** to and click **Install**.
8. After the files have been copied and saved to your computer, click **Close**.

Setting up the Clipstream™ Live Server

NOTE: **Clipstream™ Live** requires a live video input device powered on and connected to your PC for the application to run. **Clipstream™ Live** will shut down if there is no live source.

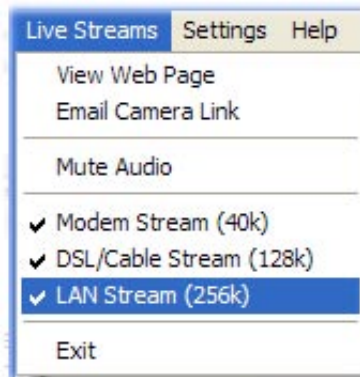
Once launched, **Clipstream™ Live** will automatically detect your attached live video input and your PC's IP address. An image from your camera or live video input will appear in the main window. When this is done you can start setting up your video options.



Select Live Streams

Clipstream™ Live provides optimized streams to modem, DSL/Cable and LAN connections. You can choose to enable or disable types of connections from the **Live Streams** menu.

1. Open the **Live Streams** menu (first from the left).
2. Click on any of (modem / DSL/Cable or LAN) menu selections to enable them.



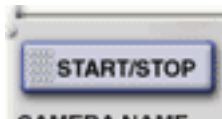
3. Open the **Live Streams** menu after each time and you will see that they have a Check beside them. To disable any, click on them to remove the Check mark.
4. You must now exit **Clipstream™ Live** to save these to your settings. Open the **Live Streams** menu again. Click on Exit.
5. Launch **Clipstream™ Live** again.

Start Streaming

Use the big button to start streaming

The easy part.

- Click the **Start/Stop button** to begin streaming.



In the box next to the **Start/Stop button** it should now read: "Streaming on [your IP address] - 0 connections". You are now streaming.

View your webcast

There are two ways you can view your webcast.

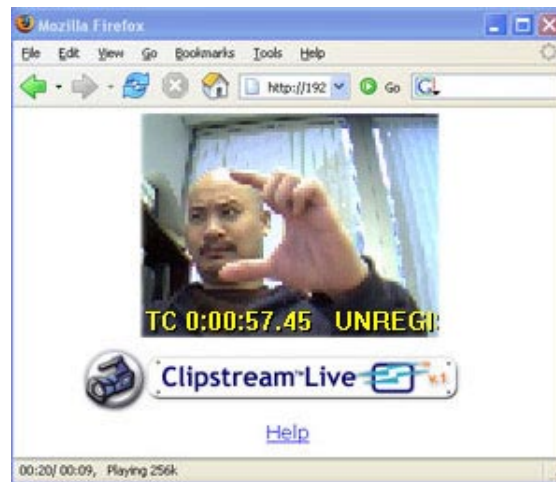
- Type in your IP address into your browser's address field.

Note: *type in the address that appears in the box beside the **Start/Stop** button.*

- OR Open the Live Streams menu. Click on **View Web Page**.



A web page should load that displays your video.



Let others know about your webcast

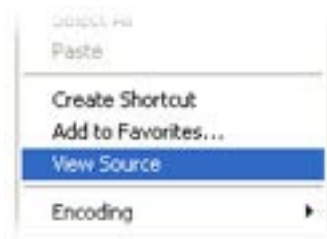
When you are able to see the web page with your live video feed displayed, you can send it to others as is or you can cut and paste the applet into an existing page.

Send your web page to others

- Copy the IP address in your browser's address field in the page that is displaying your live video. Paste it into an email and send it to your recipient.

Cut and paste Clipstream™ Live applet code into an existing page

1. Right click on a clear space in the page displaying your live video.
2. Select **View Source**.



A text file displaying the page's source code HTML will display.

3. In the code text, locate the portion of the code that begins with:

```
<!-- begin Clipstream Live applet -->
```

and ends with:

```
<!-- end Clipstream Live applet -->
```

4. With your mouse, drag and select all the lines of code inside and including those two lines.
5. Once that block of code is selected, copy it (**CTRL-C**).
6. Open up the HTML code of the page where you want the **Clipstream™ Live** video to appear.
7. In the space where you want it to appear, paste the **Clipstream™ Live** applet code (**CTRL-V**).

Adding codebase statement

1. In your page locate the Clipstream Live applet code again.
2. In the top line where it says <applet add a space and then type in this extra code:

```
codebase="http://[your IP address]"
```

Where [your IP address] is, type in the IP address that appears in **Clipstream™ Live** (beside the Start/ Stop button)

3. Save that page and upload it. View it in your browser.

NOTE: Your live video will display as long as your PC is playing the **Clipstream™ Live** application. If you quit **Clipstream™ Live** or shut down the PC, nothing will appear in the space where you had the applet code.

Advanced Topics

By following the previous steps you will have experienced the very basic setup and operation of **Clipstream™ Live**. There are a number of options that you may wish to explore by going to our website at live.clipstream.com or through consultation with a sales representative.

Quality settings / dimensions / frame rate

Default quality settings are set in a configuration file that the **Clipstream™ Live** application reads called the `live.ini` file.

Browse to <http://live.clipstream.com/help/editini.shtml> for more information.

Common options

Autoplay, visitor time out, securing your streams, zoom enable, mute, licensing are all topics covered in our website.

Event webcasting

Clipstream™ Live has been used for major event webcasting by CART Racing, Sun Microsystems, and the Vancouver-Whistler 2010 Legacies committee among others. To learn how to effectively webcast a live event, please consult a sales representative.

Clipstream™ Live 2.5 Technical Guide

More technical information about how Clipstream™ Live works including guide to the Clipstream™ Live Repeater is available in the Clipstream™ Live 2.5 Technical Guide, included in the basic install package.

Licensing Clipstream™ Live

To remove the watermark you must license **Clipstream™ Live** for your machine. Buy online or consult with a sales representative if you have questions or special requirements.

- Browse to <https://www.clipstream.com/livesub/buylive.shtml> to buy online.

-OR-

- Browse to <http://www.clipstream.com/livesub/contact.shtml> to speak to a sales rep.

Troubleshooting

If you encounter any problems in these steps, please visit our support website and consult the following resources:

<http://live.clipstream.com/support.shtml>

- Includes FAQ, how to license, viewing issues, configuration options.

Search the Clipstream™ Live knowledge base

1. Browse to **support.dsny.com**.
2. Click **Search Knowledge Base**.
3. In the Knowledge Base page, select "Clipstream" from the category drop-down menu.
4. Enter in your query in the field marked **Query**.

Enter a support ticket into our Help Desk

Our development and support staff see requests entered into the Help Desk and answer them in the order they appear. Please indicate if you are an existing customer so that we can look up your previous details in our customer database.

1. Browse to **support.dsny.com**.
2. Click **Submit a query to the Help Desk** .
3. Enter in your question and information in the Help Desk form.

Install Sun Java in your browser

1. Browse to **<http://java.com/en/download/manual.jsp>**.
2. Follow the instructions to install Sun Java manually.

NOTE: Clipstream™ Live is compatible with the older Microsoft JVM install.